

The logo for Advance Fenestration features a stylized window icon composed of six rectangular panes in shades of blue and white, arranged in a 2x3 grid.

Advance Fenestration

A photograph of a modern, two-story building with a prominent glass facade. The building features a large glass balcony on the upper level and a glass-walled ground floor. In the foreground, there is a swimming pool with a glass safety fence and a stone fire pit on a concrete base. The background shows a green lawn and a clear sky.

European Systems Range

EUROPEAN DESIGNED, *South African manufactured*

World-class aluminium systems, designed in Europe to exacting specifications, and manufactured locally in South Africa for superior results in less time.

- Architectural standard.
- Cutting-edge style.
- Completely customisable: any style, any colour.
- Internally glazed with a multi-lock system for improved security.
- Extruded and manufactured in South Africa under license.
- Uniform ironmongery throughout the entire range.
- Systems can accommodate double glazing thicknesses from 18 – 34mm.
- Lasting quality backed by our unbeatable warranties.



Choose the Advance Fenestration European Systems Range for superb quality, outstanding aesthetics and exceptional security.



DOORS



 Advance
Fenestration



Enjoy optimum weather resistance combined with elegance and ease-of-use. Keep your home and family safe with our class-leading multi-locking system.

Our European Systems Range sliding doors are available with glass panel heights of up to 3.8m, and weights of up to 350kg per panel. Enjoy unmatched, floor to ceiling views of your surroundings.

Our sliding doors feature Teflon tracks and wheels for silent operation, while optional extra outer panels can be used to configure your sliding doors to your precise requirements.

DOORS: Sliding Doors

Choose our flat-track option for larger, heavier panels, and where lift & slide options are needed.

Integrated water drainage channels and EPDM gaskets ensure complete weatherproofing and lasting performance with no maintenance hassles.



DOORS: Hinge Doors

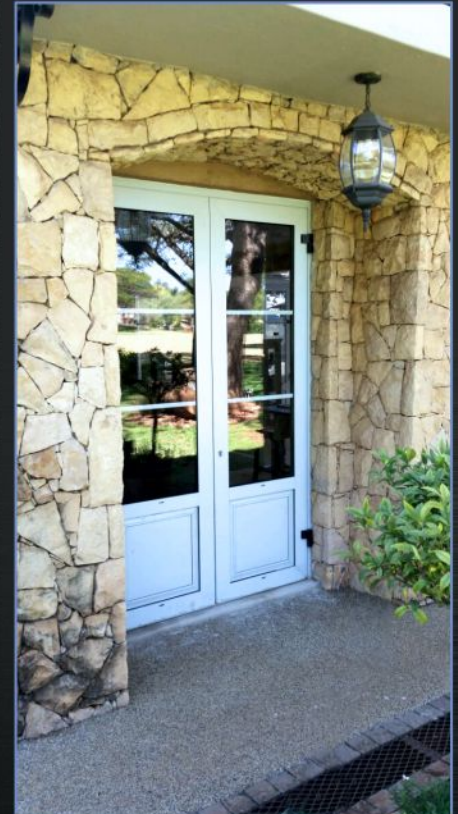
Our European Systems Range hinged door solutions are engineered to last, with heavy-duty hinges, multi-point locking systems for peace of mind and quality materials that will add to the elegance and security of your property.

Matching hardware offers you a consistent, stylish look and feel throughout.

With our European Systems Range, size is never an issue – we offer glass panel heights and widths that few others can get close to. Why let the limitations of inferior systems prevent you enjoying the view of your surroundings?

Our European Systems Range ensures ease of use even with larger glass panels off up to 1.8m wide and 165kg per panel (double-hinged doors).

Integrated water drainage channels and EPDM gaskets ensure complete weatherproofing and lasting performance with no maintenance hassles.



Our top roller system allows for total convenience, while heavy-duty hinges, EPDM gaskets and integrated water drainage channels ensure that the weather stays where it belongs: outside.

Multi-point locking provides enhanced security, while matching hardware options assure you of a stylish, uniform finish throughout your home.

The quality of our European Systems Range folding doors allows for the use of larger glass panels (up to 3m high and 1m in width per panel).

DOORS: *Folding Doors*



WINDOWS



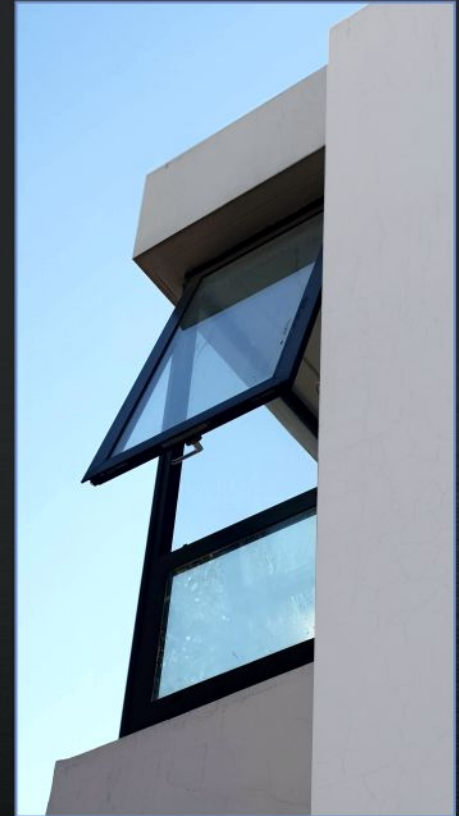
European Systems Range

Enjoy improved ventilation, larger glass panels for unrestricted views, and a streamlined design with no protruding sashes.

Our top-set, outward opening windows let the breeze and the birdsong in, while perfectly complementing the style of any luxury residential development.

- Maximum sash aperture: 1 800mm x 1 500mm
- Maximum sash weight: 90kg
- EPDM gaskets and quality friction stays for control and convenience
- Achieve a consistent style with matching hardware options

WINDOWS: Top Hung



Our European Systems Range, side-set, outward opening windows offer multiple functional and aesthetic benefits, including larger glass panels and no need for protruding sashes.

The flush inside finish when closed gives a premium look and feel and a perfect fit with contemporary residential development styles, and allows for a premium product and stylish finish that will compliment any luxury residential development.

- **Maximum sash aperture: 1 000mm x 2 200mm**
- **Maximum sash weight: 70kg**
- **EPDM gaskets and quality friction stays for control and convenience**
- **Internal beading and multi-lock system for enhanced security**
- **Achieve a consistent style with matching hardware options**

WINDOWS: Side Hung



Top tilt, inward opening window that can also be used in a door configuration for larger openings. The top tilt, inward opening configuration, along with the European locking system lends itself to a higher level of security than a standard opening window.

- Maximum panel size: 1 200mm x 3 000mm
- Maximum sash weight: 110 Kg
- EPDM gaskets and quality friction stays for control and convenience
- Internal beading and multi-lock system for enhanced security
- Achieve a consistent style with matching hardware options



WINDOWS: Tilt & Turn



All our European Systems Range door and window frame components undergo a powder coating process that meets or exceeds strict QUALICOAT requirements.

QUALICOAT is the leading global quality standard for lacquering, painting and coating on aluminium and aluminium alloys for architectural applications.

Our powder coating processes and results are regularly assessed against QUALICOAT standards and continuously monitored for compliance.

The QUALICOAT standard covers all aspects of aluminium powder coating:

- Process specifications
- Product standards and tests for manufacturers
- Licencing approved chemicals and coating products
- Monitoring the correct application of the specifications in licenced plants

The result is a consistently premium quality product that delivers lasting performance and value.



POWDERCOATING



All Advance Fenestration European Systems Range windows and doors are backed by manufacturers' warranties from our world-class suppliers, giving you lasting peace of mind and enjoyment.

- Class 1 Powder Coating: 15-year warranty
- Class 2 Powder Coating: 25-year warranty
- Double Glazing Glass: 10-year warranty
- Product Mechanisms: 2-year warranty

DOUBLE GLAZED GLASS PERFORMANCE DATA

GLASS TYPE	VISIBLE LIGHT TRANSMISSION	U/VALUE W/m	SOLAR HEAT GAIN COEFFICIENT
6.38 PVB AirGap 6.38 PVB	78%	2.68	0.67
6 TSG Sunergy AirGap 6.38 PVB	61%	2.10	0.52
Smartglass X2 Std. Double Glazed	67%	1.85	0.51
Smartglass X2 Plus Double Glazed	54%	1.90	0.47
Smartglass X2 Elite Double Glazed	52%	1.85	0.44



WARRANTEES



GALLERY



PROJECT KZN





PROJECT WOODHILL



PROJECT CARLSWALD





PROJECT CAPE TOWN 1



PROJECT PRETORIA 1



PROJECT CAPE TOWN 2



PROJECT PRETORIA 2



PROJECT AMANI



PROJECT CEDAR CREEK





PROJECT GAUTENG 1



PROJECT KZN 1



PROJECT GAUTENG 2



PROJECT KZN 2



PROJECT SERENGETI 1



PROJECT SERENGETI 2



CONTACT US

For a no-obligation quote or more information on any aspect of our European Systems Range, please reach out to us using the contact details below.

JHB. OFFICE

Tel: 011 791 1925
Unit A6, Sanlam Industrial Park
Masjien Street, Strijdompark
Randburg, 2169

info@fenestration.co.za
www.fenestration.co.za



KZN OFFICE

Tel: 032 947 0009
Unit 4, Acasia Park
1 Falcon Road
Shaka's Head

European Systems Range